



Miniature Metric Ball Bushing™ Bearings

Smooth Operation, Light Weight and Long Lasting

Thomson Miniature Metric Ball Bushing™ offer smooth and rapid operation in a light and small package that last up to 27 times longer than conventional linear bearings!

Light weight design

Low inertia enables precision movements and short acceleration times.

Double lip integral wipers

Keeps dirt out, lubrication in and increases life expectancy.

Friction coefficient as low as 0.0001

Eliminates stick-slip and ensure smooth operation.

Four different sizes

Select the optimum size for your application parameters.

Super finished bearing plates

Provides smooth operation and long life.

Travel speeds up to 3 m/s

Enables short cycle times and rapid adjustments.

Optional corrosion resistant version

For use in harsh environments.

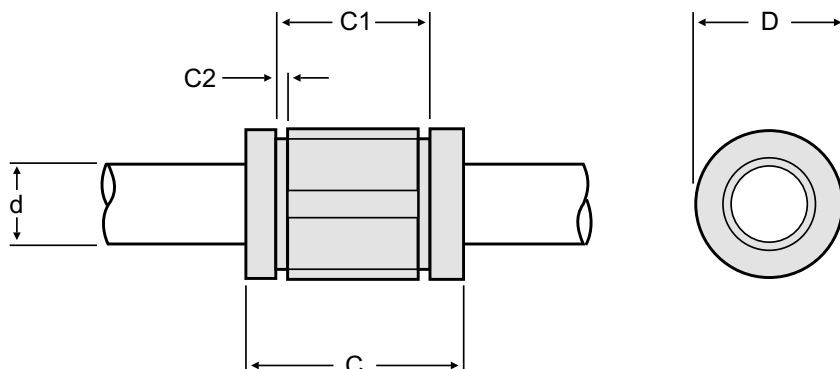
Local support around the globe

Thomson is a reliable partner with customer support centers all over the world ready to service you!

Contact Thomson today to learn how we can help you make your ball bushing bearing project successful!

Engineering Data

Thomson Miniature Ball Bushing™ bearings are precision components. To preserve bearing warranty you must use Thomson 60 Case LinearRace® shafting. Please contact customer support for additional technical support.



Specifications and Dimensions

Part number ⁽¹⁾			Dimensions [mm]					Number of ball tracks	Mass [kg]	Dynamic load rating ⁽³⁾ [N]	Load limit ⁽⁴⁾ [N]	Diametrical clearance ⁽⁵⁾	
No integral wiper	One integral wiper	Two integral wipers	d ⁽²⁾	D	C (h14)	C1 (h13)	C2 (min.)					House bore (H7) [µm]	House bore (H6) [µm]
MM03	N/A	N/A	3	7	10	-	-	4	0.001	45	50	+25 +6	+20 +5
MM05	MM05W	MM05WW	5	12	22	14.2	1.10	4	0.010	170	190	+29 +3	+23 +2
MM08	MM08W	MM08WW	8	16	25	16.2	1.10	4	0.020	310	340	+29 +3	+23 +2
MM12	MM12W	MM12WW	12	22	32	22.6	1.30	5	0.040	650	715	+33 +4	+26 +3

(1) For corrosion resistant bearings, add the suffix "-CR" to the part number. Also reduce the above load ratings by 30%.

(2) Nominal LinearRace® diameter.

(3) For a rated travel life of 100 km.

(4) The load limit is the maximum load that may be applied to a bearing/shaft. It is important to analyze the application so that peak or/and shock loads do not exceed the load limit.

(5) For ball bushing bearings mounted in a housing and using LinearRace® shafts.

**You are welcome to contact your local Thomson office for technical assistance and ordering!
Please visit www.thomsonlinear.com for more information about us, our products and services.**

USA, CANADA and MEXICO

Thomson
203A West Rock Road
Radford, VA 24141, USA
Phone: 1-540-633-3549
Fax: 1-540-633-0294
E-mail: thomson@thomsonlinear.com
Literature: literature.thomsonlinear.com

EUROPE

United Kingdom Phone: +44 (0) 1271 334 500
E-mail: sales.uk@thomsonlinear.com

Germany Phone: +49 (0) 7022 504 0
E-mail: sales.germany@thomsonlinear.com

France Phone: +33 (0) 243 50 03 30
E-mail: sales.france@thomsonlinear.com

Italy Phone: +39 0362 594260
E-mail: info@thomsonlinear.it

Spain Phone: +34 (0) 9329 80278
E-mail: sales.esm@thomsonlinear.com

Sweden Phone: +46 (0) 44 24 67 00
E-mail: sales.scandinavia@thomsonlinear.com

ASIA

Asia Pacific E-mail: sales.hk@thomsonlinear.com

China Phone: +86 400 6661 802
E-mail: sales.china@thomsonlinear.com

India Phone: +91 22 422 70 300
E-mail: sales.india@thomsonlinear.com

Japan Phone: +81-6-6386-8001
E-mail: csinfo_dicgj@danaher.co.jp

Korea Phone: +82 2 547 7807
E-mail: sales.korea@thomsonlinear.com

www.thomsonlinear.com

Metric_Miniature_Bearings_BRUK-0001-02B | 2013 NOV 12
Specifications are subject to change without notice. It is the responsibility of the product user to determine the suitability of this product for a specific application. All trademarks property of their respective owners.
© 2013 Thomson Industries, Inc.



Linear Motion. Optimized.™