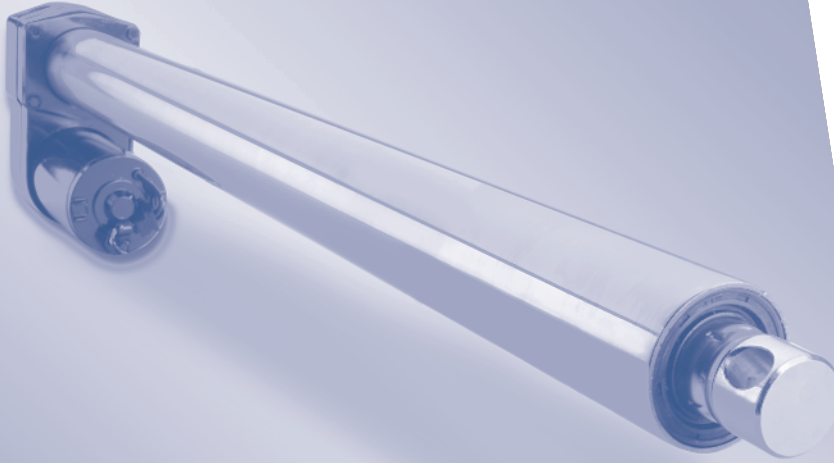


ELECTRAK® MARINE ACTUATORS

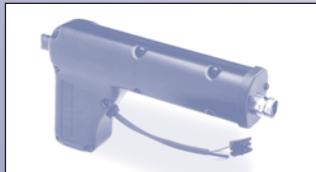


Features & Benefits

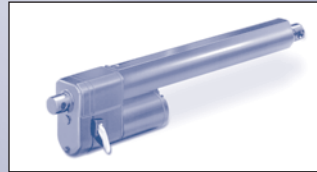
- Compact size
- Operates off 12 or 24 VDC boat battery for versatility
- Draws power only when load is being moved for high efficiency
- Holds load with power off for safety
- Stroke lengths from 2 to 24 inches
- Load ratings from 25 to 1500 lbs.
- Ball or acme screw drives for high or moderate load ratings
- Built-in brakes on ball bearing screw models to prevent back driving
- Weather protection seals & gaskets
- Ignition protected motors per Coast Guard requirements on selected designs
- Overload protection
- Lifetime lubrication gearbox - no maintenance

Thomson offers a complete line of Electrak linear actuators and controls to provide the boat and marine manufacturer with an ideal source for push-pull power on watercraft. Our Electrak linear actuators are well suited for the marine industry due to their compact size, 12 or 24 VDC operation, high efficiency and broad load capabilities.

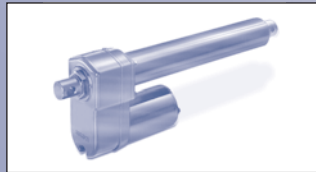
The full range of Electrak actuators offer users complete control of every aspect of a boat's operation electrically, without the complication, high cost, and maintenance associated with hydraulic systems. Electrak actuators are easy to install with clevis mounting and eliminate the need for hoses, pumps, filters, regulators, and periodic maintenance



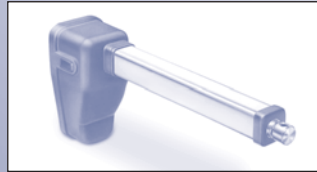
Electrak E050



Electrak 1



Electrak 10



Electrak E150

THOMSON™

Ideal for Power Boats and Sailcraft : Electrak linear actuators find extensive use on power boats and sailcraft – all with the push of a button.



Typical Applications:

- Raising, lowering, holding hatch covers
- Boom control when raising or lowering the mainsail
- Opening, closing, holding windows
- Downhaul control
- Raising and lowering trailer hitches
- Seat positioning

| | Electrak 050 | Electrak 1 | Electrak 2 | | Electrak 10 | | Electrak 150 |
|--------------------------------|------------------------------|--|--|--|--|--|-----------------------------------|
| Load Capacity | 25, 50, 112 | 25, 75 | 250 | 250 | 500, 1000, 1500 | 500, 1000, 1500 | 110, 225, 450 |
| Stroke Length | 2, 4, 6, 8 | 2, 4, 6 | 4,8,12,18,24 | 12, 18, 24 | 4,8,12,18,24 | 12, 18, 24 | 1, 2, 4, 6, 8, 10, 12, 14, 16 |
| Type of Screw | Acme | Acme | Acme | Acme | Ball | Ball | Acme |
| Load Limiting Clutch | Yes | No | Yes | Yes | Yes | Yes | No |
| Limit Switches Stroke Standard | Fixed End of Stroke Standard | Fixed | No MCS-2007 Control | No | No | No | Optional Adjustable End of Stroke |
| Motor Overload Protection | Yes | Yes | Yes | Yes | Yes | Yes | Yes |
| Restraining Torque (max) | None - Internally Restrained | 20 lb. in | 100 lb. in | 100 lb. in | 100 lb. in | 100 lb. in | None - Internally Restrained |
| Optional Controls | DPDT switch | DPDT switch | DPDT switch | DPDT switch | DPDT switch | DPDT switch | DPDT switch |
| Ignition Protected Motor | No | No | Optional | Yes | Optional | Yes | No |
| Cover Tube | Plastic | Painted Aluminum | Painted Steel | Stainless Steel | Painted Steel | Stainless Steel | Anodized Aluminum |
| Environment | IP56 | Washdown w/ 96 hour salt spray test rating | Washdown w/ 96 hour salt spray test rating | Washdown w/ 96 hour salt spray test rating | Washdown w/ 96 hour salt spray test rating | Washdown w/ 96 hour salt spray test rating | IP56 |



Thomson makes every attempt to ensure accuracy and reliability of the specifications in this publication. Specifications are subject to change without notice. Thomson provides this information "AS IS" and disclaims all warranties, express or implied, including, but not limited to, implied warranties of merchantability and fitness for a particular purpose. It is the responsibility of the product user to determine the suitability of this product for a specific application.

©2004 Thomson Industries, Inc. 200407-05 20160810KB

FOR IMMEDIATE ASSISTANCE:

| | | | |
|---------------------------|--|------------|--|
| Internet: | www.ThomsonLinear.com | In Europe: | Phone: +46 (0) 44 24 67 00 Fax: +46 (0) 44 24 40 85 E-mail: helpdesk@tollo.com |
| In USA, Canada or Mexico: | Phone: 1-540-633-3400 Fax: 1-540-639-4162 E-mail: DMAC@thomsonlinear.com Literature: litrequest@thomsonlinear.com | or write: | Thomson Industries, Inc. Tollo Linear AB Box 9053 SE-291 09 Kristianstad Sweden |
| or write: | Thomson Industries, Inc. 203A West Rock Road Radford, VA 24141 USA | or | Phone: +49 (0) 70 22 504-0 Fax: +49 (0) 70 22 541-68 |
| In UK: | Phone: 0800 975 1000 Sales Fax: 0800 975 1001 E-mail: LMSEurope@thomsonlinear.com | or write: | Thomson GmbH Nürtinger Strasse 70 D-72649 Wolfschlugen Germany |
| or write: | Thomson Industries, Inc. Fishleigh Road, Roundswell Business Park Barnstaple EX31 3UD UK | Elsewhere: | Phone: 1 (516) 883-8937 Fax: 1 (516) 883-7109 |
| Catalogue request: | catalogues@thomsonlinear.com | | |